

HB1000 Series In-Furnace Data Logging Device

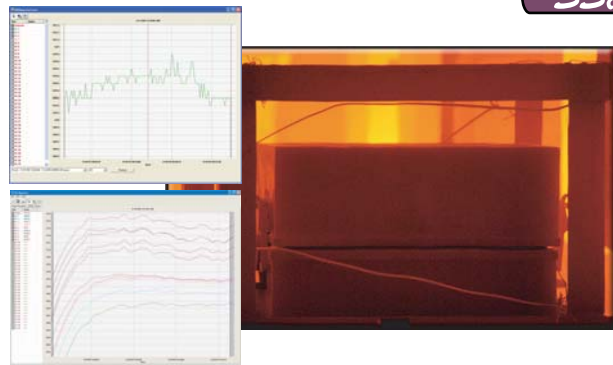


The HB1000 series provides data gathering capabilities in a unit designed for in-furnace data recording. The HB1000 series eliminates the requirement for compensated thermocouple wire. The HB1000 can run continuously for extended periods of time in the furnace.

Measurement Range:	+200°F (93° C) to +2498° F (1370° C)
Accuracy:	±0.9°F (±0.5° C)
Resolution:	0.2°F (0.1° C)
Maximum Operating Temp:	158°F (70° C)
Number of Channels:	10
Trigger Channel:	CH 1
Sample Interval:	1 Second
Recording Start/Stop Temp:	Set Via USB port
Memory Type:	Non-Volatile Data Flash
Data Points:	786,432 (memory fully loaded) 196,608 (one memory chip loaded)
Battery Type:	Lithium Polymer
Max Battery Life:	40 Hours Between Charges
Battery Charging:	Via USBPort (or external supply)
Communications:	Via USBPort
Data Logger Reset:	Via USBPort

HB1000 Benefits

- Operating temperatures up to 1850°F (1010°C)
- Stainless steel exterior
- Wear strips protect the thermocouple exits
- 10 thermocouple channels
- Sampling intervals down to 1 second
- USB communication port for fast and convenient data downloads

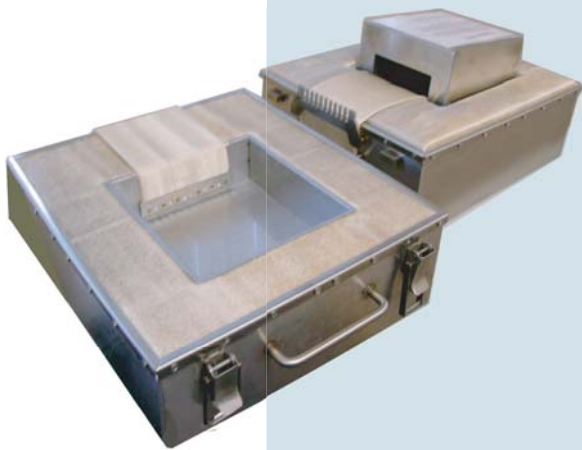


INNOVATIVE SOLUTIONS WORLDWIDE



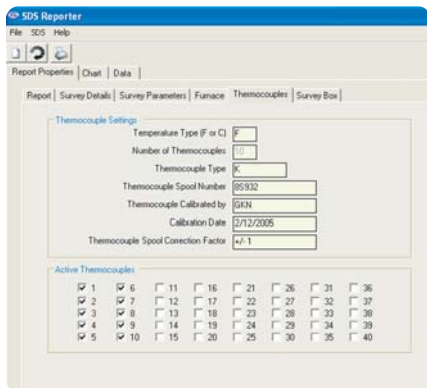
Super **Systems**
incorporated

HB 1000



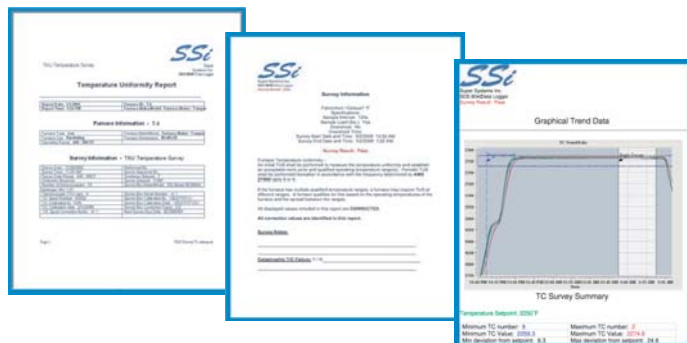
SSi Product Name	HB1012	HB1015
Weight - lbs (Approx):	33.55	53.9
Height - Inches:	7.05	10.04
Width - Inches:	11.38	12.99
Length - Inches:	17.52	18.50
Temperature in °F	Time at Temp	Time at Temp
482	7hrs 30min	13hrs
572	5hrs 45min	10hrs 30min
662	4hrs 45min	8hrs 35min
752	4hrs	7hrs 25min
842	3hrs 30min	6hrs 30min
932	3hrs	5hrs 35min
1022	2hrs 50min	5hrs
1112	2hrs 30 min	4hrs 40min
1202	2hrs 15min	4hrs 15min
1292	2hrs 10min	4hrs
1382	2hrs	3hrs 45min
1472	1hr 50min	3hrs 30min
1562	1hr 45 min	3hrs 15min
1652	1hr 45min	3hrs
1742	1hr 30min	3hrs
1832	1hr 30min	2hrs 50min

SSi



AMS 2750 D Compliant

The SDS Reporter software features several ways to simplify the report writing process. Documents can be customized by the operator using the Report Manager. The Template Manager allows survey-specific data to be created, updated, and available during reporting. All reports can be printed, saved electronically, and e-mailed using the software utilities.



Super Systems
Incorporated

7205 Edington Drive
Cincinnati, OH 45249
513.772.0060 phone
513.772.9466 fax

www.supersystems.com 800.666.4330