

MGA6010

PRECISION MEASUREMENT OF PROTECTIVE
HEAT TREATING ATMOSPHERE

Continuous NDIR Gas Analyzer

- Integrated automatic calibration
- 4-20mA output for each gas
- Two user-assignable alarm outputs with visible alarm indication
- Custom configurable calculations and gas ratios available
- Digital inputs for:
 - Pump Start/Stop
 - Inhibit COF/PF adjustment
 - Initiate Zero calibration
 - Initiate Span calibration
- IR %C Calculation and indication of probe %C
- Two Ethernet ports [one direct to screen, another direct to sensor]
- Capable of Probe Plus IR for automatic adjustment of COF/PF
- Automatic sampling parameters prevent damage to instrument
- Color touch screen

Included software for data management:

- Language editor
- Data manager for downloading
- Print charts and tabular data
- Setup facility and furnace identifiers
- Add notes when capturing data
- Real time graphical display on PC
- Export utilities
- Backup data manager



Gas Cells Available:

- **Carbon monoxide (CO)**
Range: 0 - 100%
- **Carbon dioxide (CO₂)**
Range: 0 - 2.00%
- **Natural gas (CH₄)**
Range: 0 - 100%
- **Hydrogen (H₂)**
Range: 0 - 100%

Communications :

(2 Ethernet, RS485, 4 4-20mA)

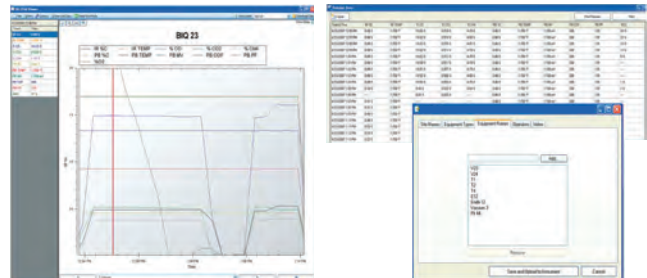
Two USB ports

(1 for communications, 1 for off-line data storage)

Standard pump is 110VAC, 230VAC pump available

Custom ranges available for all gases, consult factory

Exothermic gas ranges available



INNOVATIVE SOLUTIONS WORLDWIDE

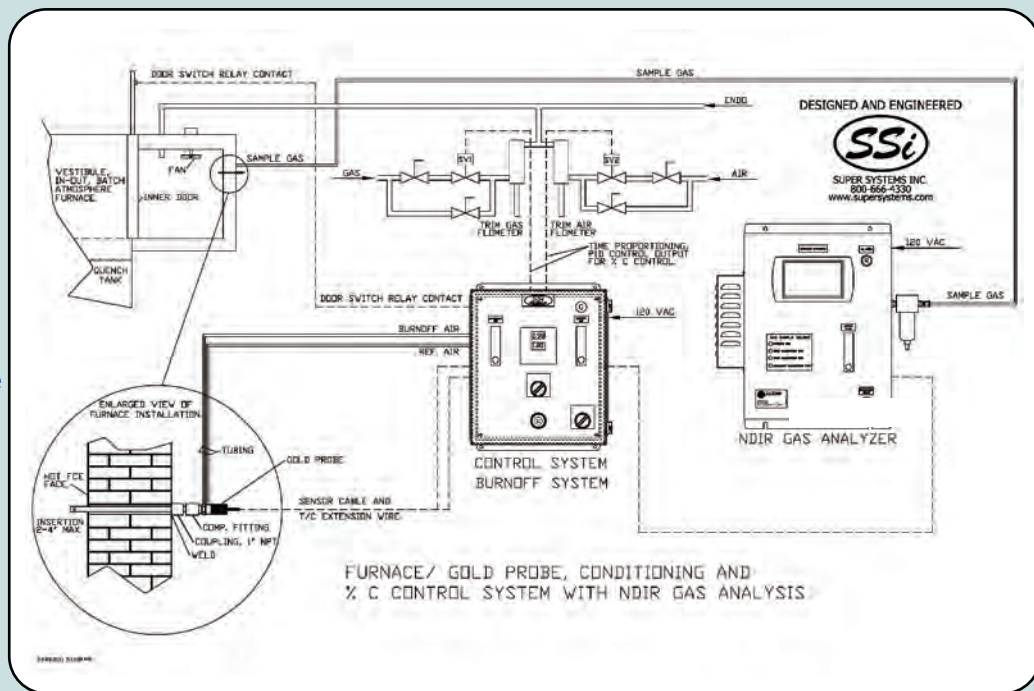


Super Systems
incorporated

Critical Furnace Control

Probe + IR System

- Automatically adjusts CO Factor (COF)
- COF limits predetermined for % Carbon adjustment
- Millivolt and temperature limits for furnace gas sampling
- Switch from Probe + IR control to monitor mode



MGA6010 Benefits

Heat Treat Furnaces Conventional Endo Gas

- Enhances quality through process repeatability and accuracy
- On-screen trending chart
- Probe + IR control replaces manual adjustment of COF
- 3-gas analyzer shows possible problems (sooting, water leaks, air leaks, radiant tube leaks)
- Stainless steel fittings, optional stainless steel transducers are required for use with non-dissociated Ammonia
- AutoCalibration integrated into the MGA 6010
- CarbCALC II is available on touch screen as a reference tool
- Session recording with customizable user names and equipment



Ancillary Items

- Zero gas cylinder Part# 13505
- Span gas cylinder Part# 13504
- Sample tube Part# 20264



SuperSystems
incorporated

7205 Edington Drive
Cincinnati, OH 45249
513.772.0060 **phone**
513.772.9466 **fax**

www.supersystems.com 800.666.4330