

# Nitriding and FNC Control



**SuperSystems**  
incorporated

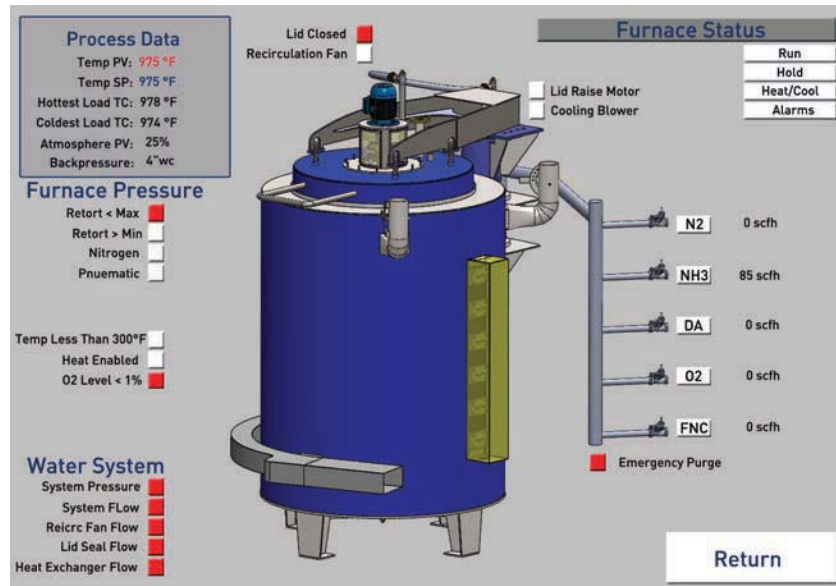
This SSi system will provide a furnace with the ability to run recipes for one- or two-stage automated gas nitriding cycles and control the necessary parameters to achieve precise metallurgical results. SSi's programmable controller includes a touch screen interface with a built-in data logger and controls  $K_N$ , %DA, temperature, back pressure, soak time, and all gas flows.

A small footprint for a complete electrical and flow control panel minimizes operator intervention with precision control and maximizes cycle times for furnace utilization and meeting quality standards.



**Nitriding Potential**  
**Dissociated Ammonia**  
**Carburizing Potential**

$K_N$   
**%DA**  
 $K_C$



SSi provides equipment for measuring the concentration of reactive gases in the retort—gases necessary for determination of the nitriding and carbon activity meeting the following AMS Specifications: AMS2759/6 (Nitriding), AMS2759/10 (Automated Nitriding) and AMS 2759/12 (FNC)



Full Furnace Safeties

Precision Measurement of Furnace Atmosphere

Temperature Control

Recipe Management

Automated 2 stage nitriding including pre- and post-oxidation  
Remote recipe management

Process Gas Flow Control

$N_2$ , %DA,  $CO_2$ ,  $NH_3$ ,  $O_2$

$K_C$ ,  $K_N$ , %DA Atmosphere Control

Pre-Ox, Post-Ox Control

Configurable I/O Based on Furnace Setup

Emergency  $N_2$  Purge

Furnace Back Pressure Control

Furnace Overtemp

Furnace Pressure Monitoring

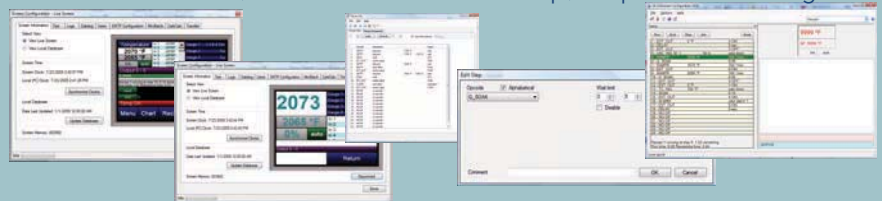
$O_2$  Monitoring



### Software Configuration/Remote Management

**TS Manager** - Data management for touch screen flash card.

Remote data viewer, historical data backup, SuperDATA integration.



## Electronic Flow Control

Nitrogen

Ammonia

Dissociated Ammonia (DA)

CO<sub>2</sub>

## Hydrogen Analyzer

Precision Measurement of Furnace Atmosphere

## Oxygen Analyzer

Furnace Safety - Quick Purge Time

## Analog Pressure Meters

## Easy To Maintain Sample and Process Gas Lines

Auto Sample Parameters

Manual Hand Valves

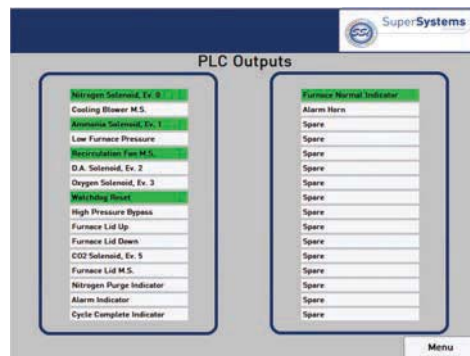
Drip Legs

Filters

## Password Protected Operator Interface

## Digital Data Logging

## Built In Maintenance Alerts



## Alarms

### Pressure Alarms:

High Furnace Pressure  
Low Furnace Pressure  
Back Pressure

### Deviation Alarms:

Temperature Deviation  
%DA Deviation  
K<sub>N</sub> Deviation

### Other Alarms:

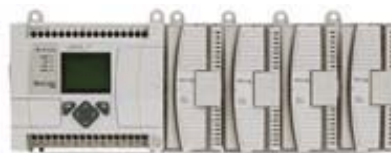
High Temperature Limit  
Recipe Hold Time  
Oxygen Levels  
Low Flow  
Purge

## High and Low Pressure Supply Supported

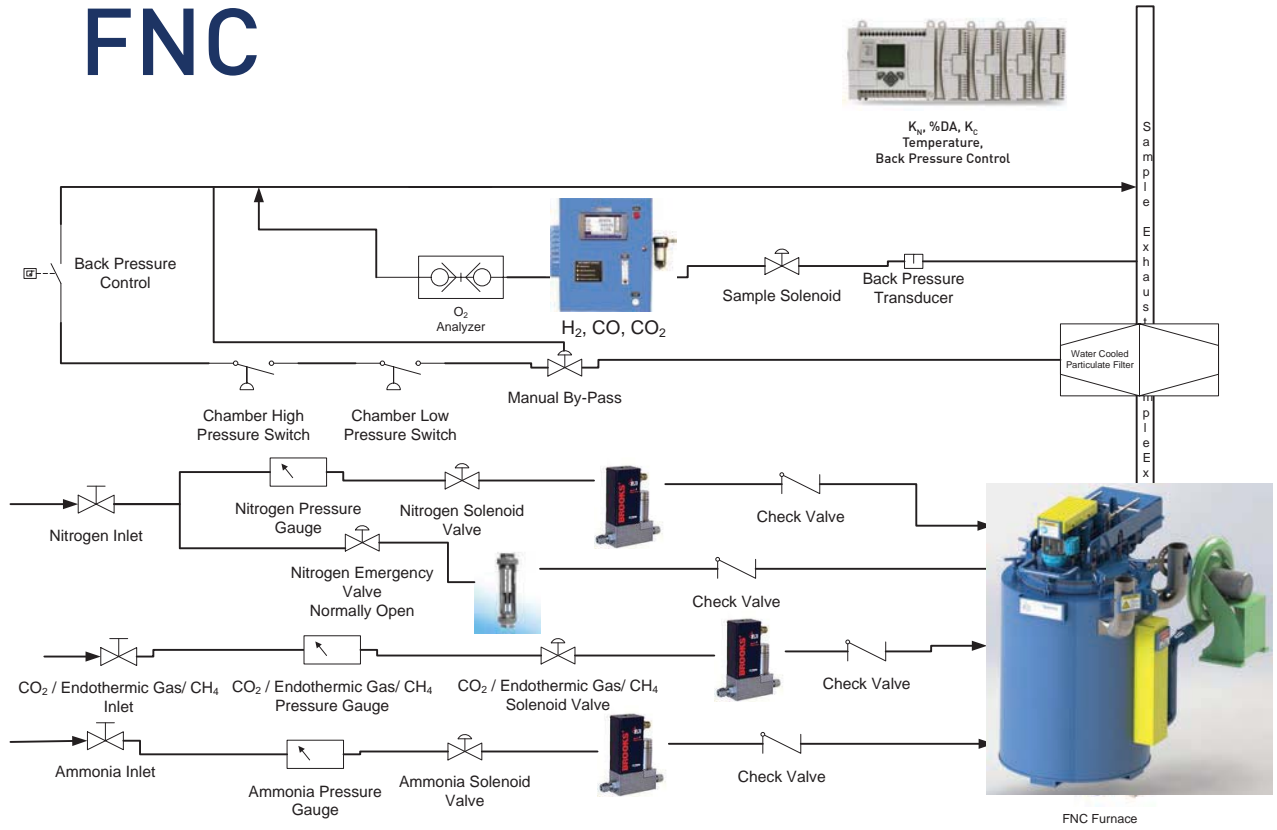
## Extensive Sample Filtering

## Exhaust Burnoff

## SCR or Contact Heated



# FNC



# Nitriding

